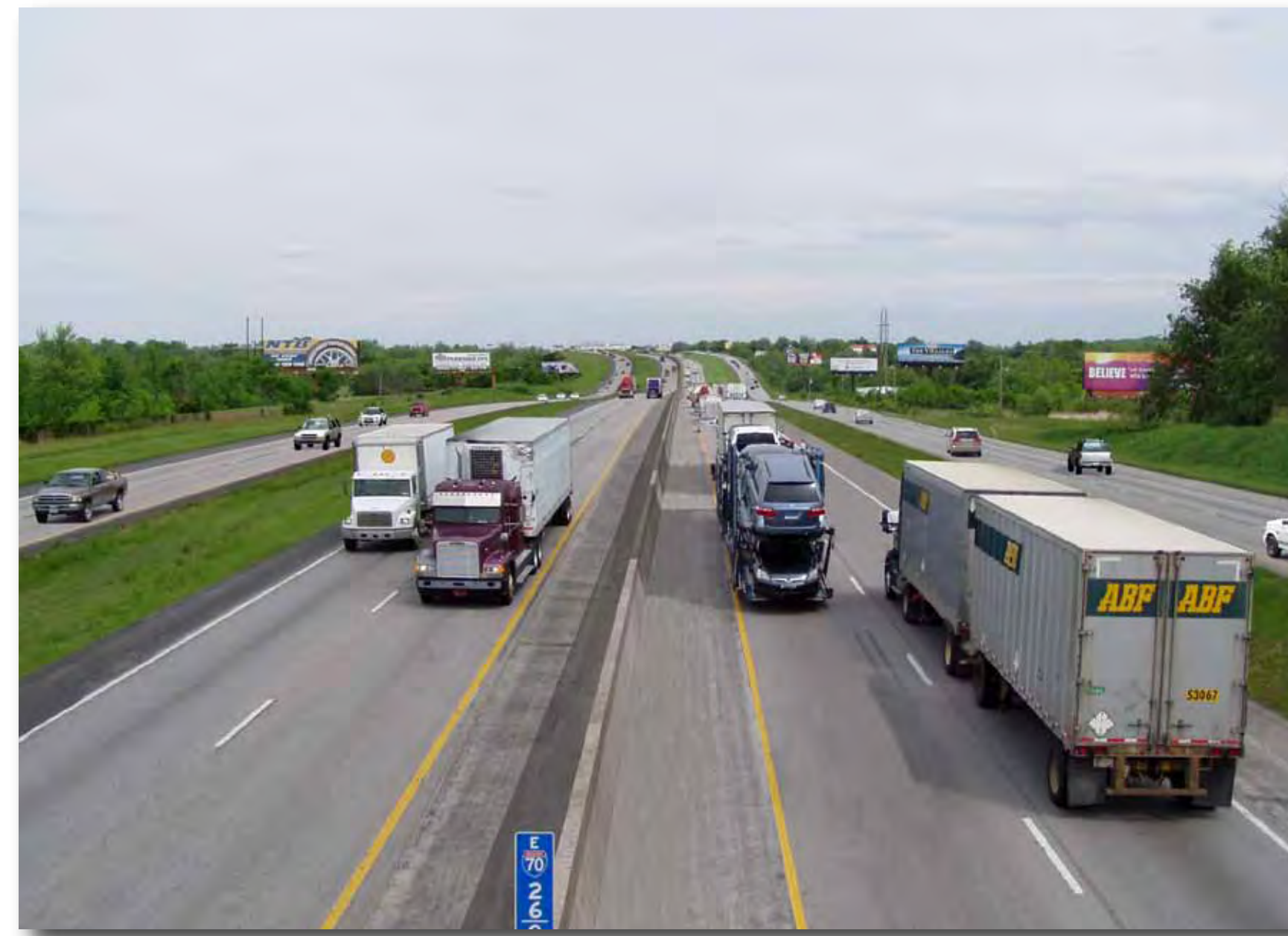


Why this study?



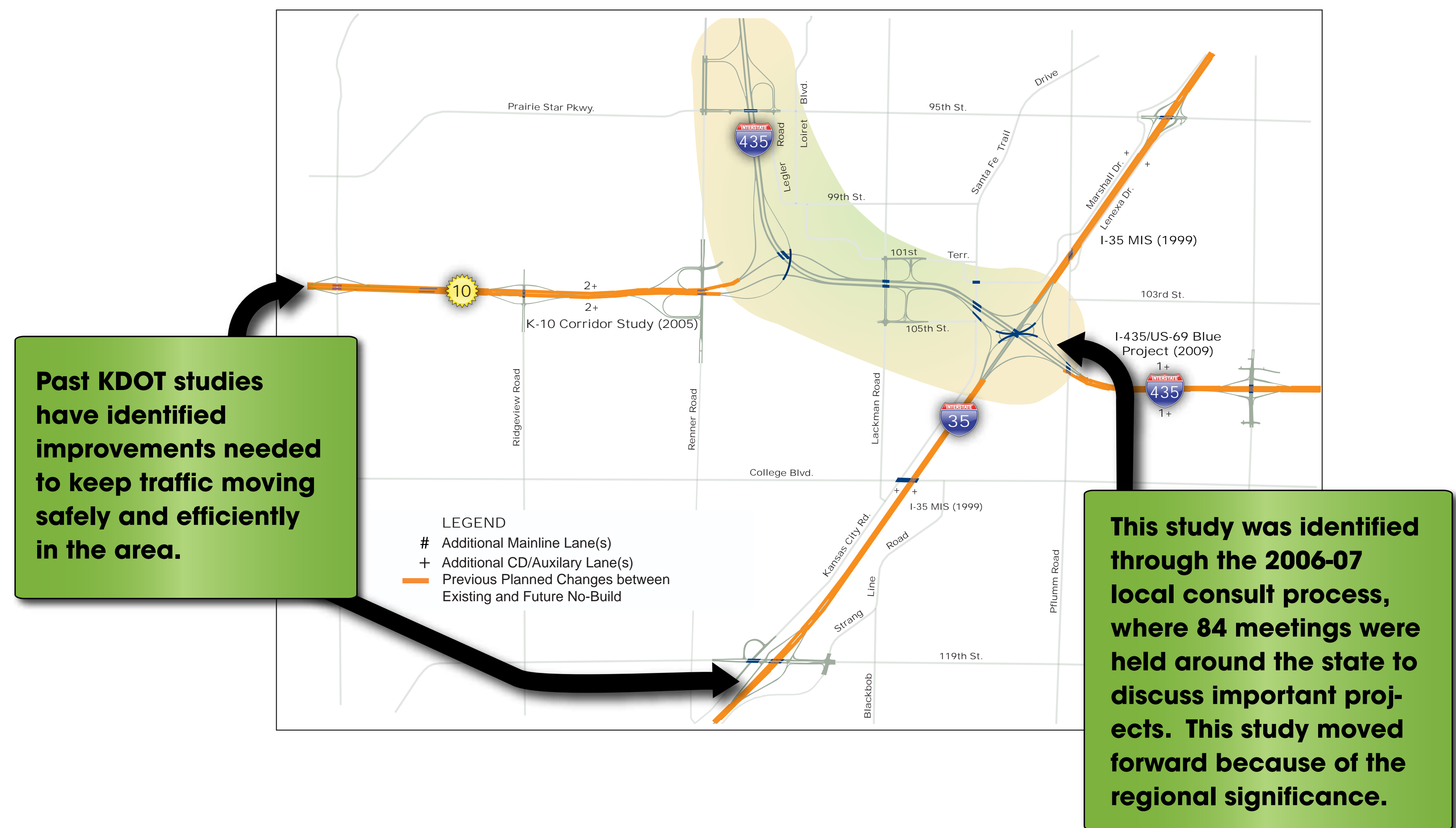
Nearly a quarter of a million people each day rely on the I-435/I-35/K-10 interchange area to enable them to move safely, efficiently and conveniently through Johnson County.

As the region continues to grow the Kansas Department of Transportation (KDOT) will determine what improvements should be made to safely handle future traffic demands, and support economic development.

Purpose of the study

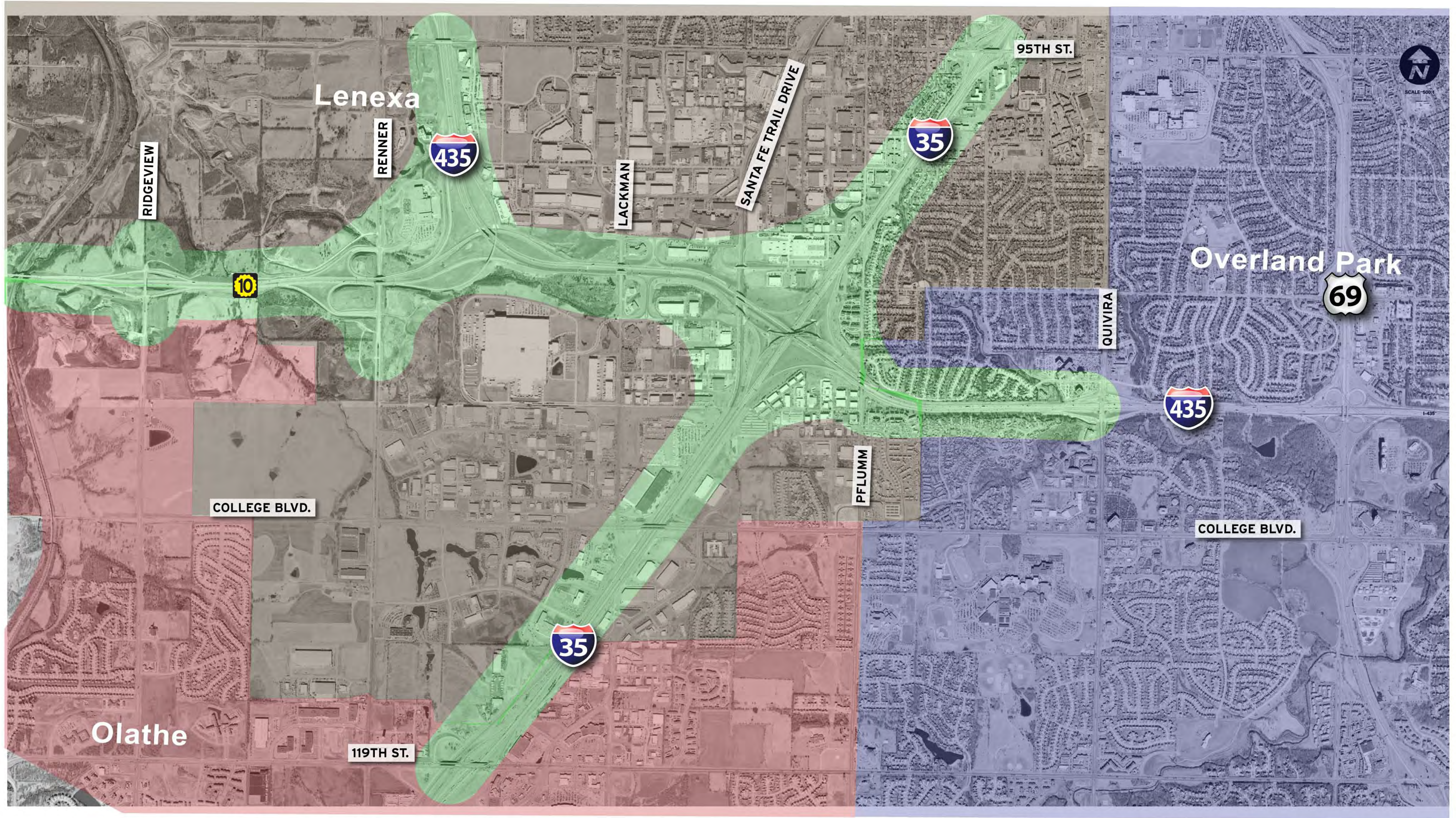
The purpose of this study is to develop an ultimate interchange concept which facilitates traffic and can be implemented in phases supporting both economic development and quality of life. Due to the anticipated increase in the movement of people and freight in and through the interchange area, the study will consider a range of multimodal approaches to meet current and future transportation needs through the year 2040. The study will respond to these needs in a manner that improves safety, mobility, and access.

Why study this area now?



Study area: I-435/I-35/K-10 Interchange

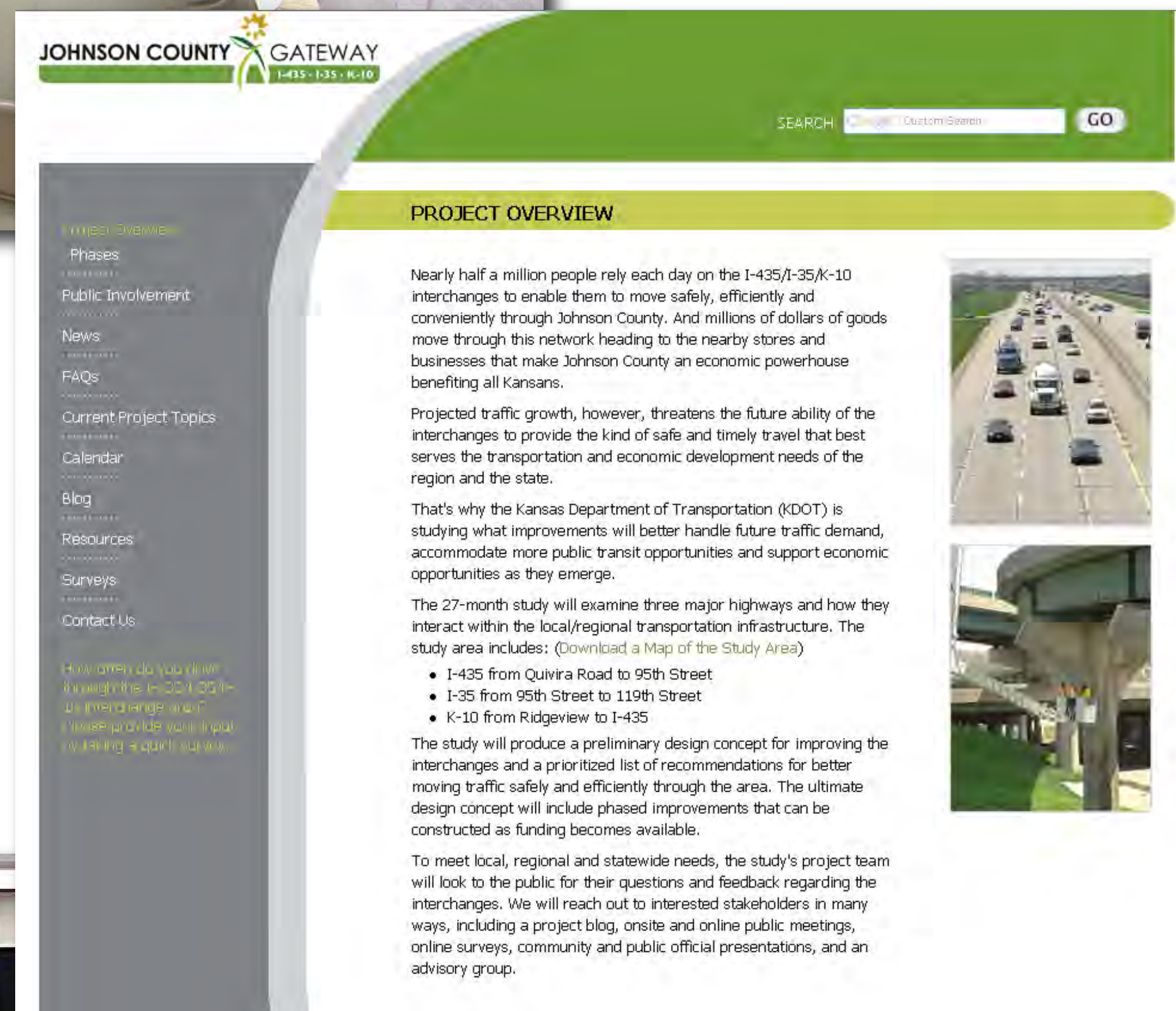
Do you have concerns in the study area? Please identify your areas of concern with a dot.



The green shaded area represents the boundary of the highway study area. Adjacent arterial roads are also part of the study.

What we've heard:

We've heard initial thoughts on the study, but have a number of tools to keep you informed and engaged.



In October and November the study team conducted a series of community interviews with businesses, commuters, regional representatives, transit providers and community leaders who have an interest in the I-435/I-35/K-10 interchange study.

The top three issues and concerns we heard with the interchanges are:

- **Safety**—improving access to I-35 ramps and reducing congestion delays.
- **Construction delays.**
- **Funding**—identifying funding to support such a large project.

The project **blog** allows web site viewers to read posts from other citizens, ask questions and post comments. So far we've had posts on noise walls, why the study process takes so long and what areas within the interchanges are of concern.

Stay Informed.

There are a number of ways to keep track of the study progress and provide your thoughts along the way:

- **Visit** the web site: www.jocogateway.com
- **Sign up** for our electronic newsletter on the web site.
- **Participate** in the online surveys.
- **Attend** public meetings and workshops.
- **View** online meetings on the web site.
- **Request** a presentation for your civic group or neighborhood association.
- **Ask** questions or leave comments on the project blog or at public meetings.